

# Elenos Group World Broadcast

WEBINAR:  
*AudioVAULT Updates and Innovation*



# Webinar Schedule

- Million Dollar Question
- The NEW AudioVAULT
- Completely Flexible
- Rock-Solid Reliable
- Infinitely Expandable
- Reimagined Satellite Automation
- Perfect Timing™
- Integration
- FlexWeb
- Cloud Capability
- Advanced Enterprise Automation
- Hands On
- Your questions



Your host:  
Chuck Kelly  
VP Market Development



Special Guest:  
Bob Demuth  
Business Development Studio Systems



*Remember, watching this webinar qualifies for ½ credit towards SBE certification under Category 1.*



# The Million Dollar Question



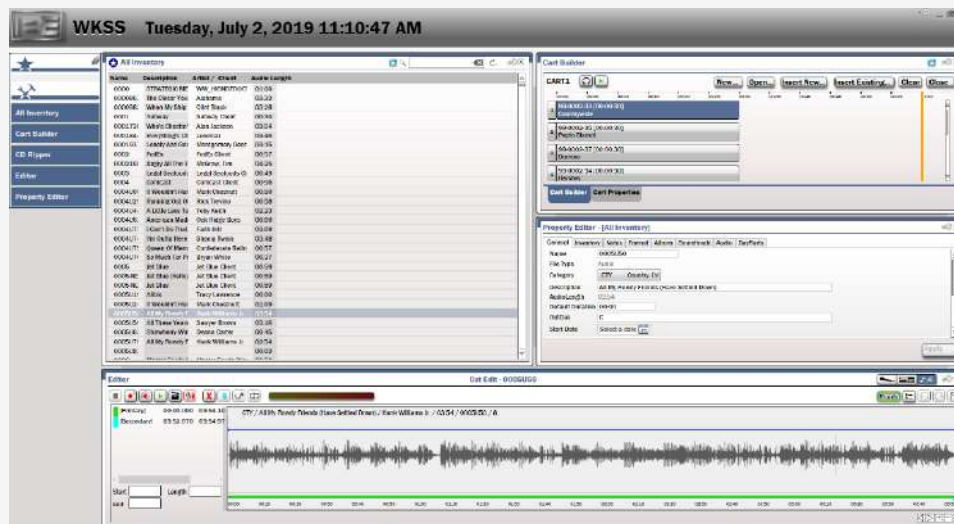
# The *NEW* AudioVAULT



- AudioVAULT version 10 is the 4<sup>th</sup> generation of AudioVAULT software. Version 11 is due Spring 2020.
- AudioVAULT combines the latest in Radio Automation concepts with the Rock-Solid reliability that users have come to expect from AudioVAULT and BE.
- We'll go over some of the new features that make AudioVAULT the best choice for your station, group, or enterprise.



# Have it your way...



- Flexibility is the key; No “one size fits all” solution here. AudioVAULT can easily be configured to meet YOUR needs
- Multiple UI’s per Playout Engine
- Customizable “Gadgetized” UI’s
- UI’s can be customized for each task
- Each user can have their own UI configuration



# Built on a legacy of robustness

- Separate UI and Playout Engine
- Redundant Playout Engines with synchronized SQL Schedule Database
- Seamless backup transfer between Active and Playout engines
- Various File Storage options
- Audio File Server redundancy with inaudible Failover
- Intelligent File Synchronization

**Schedule** Highlight

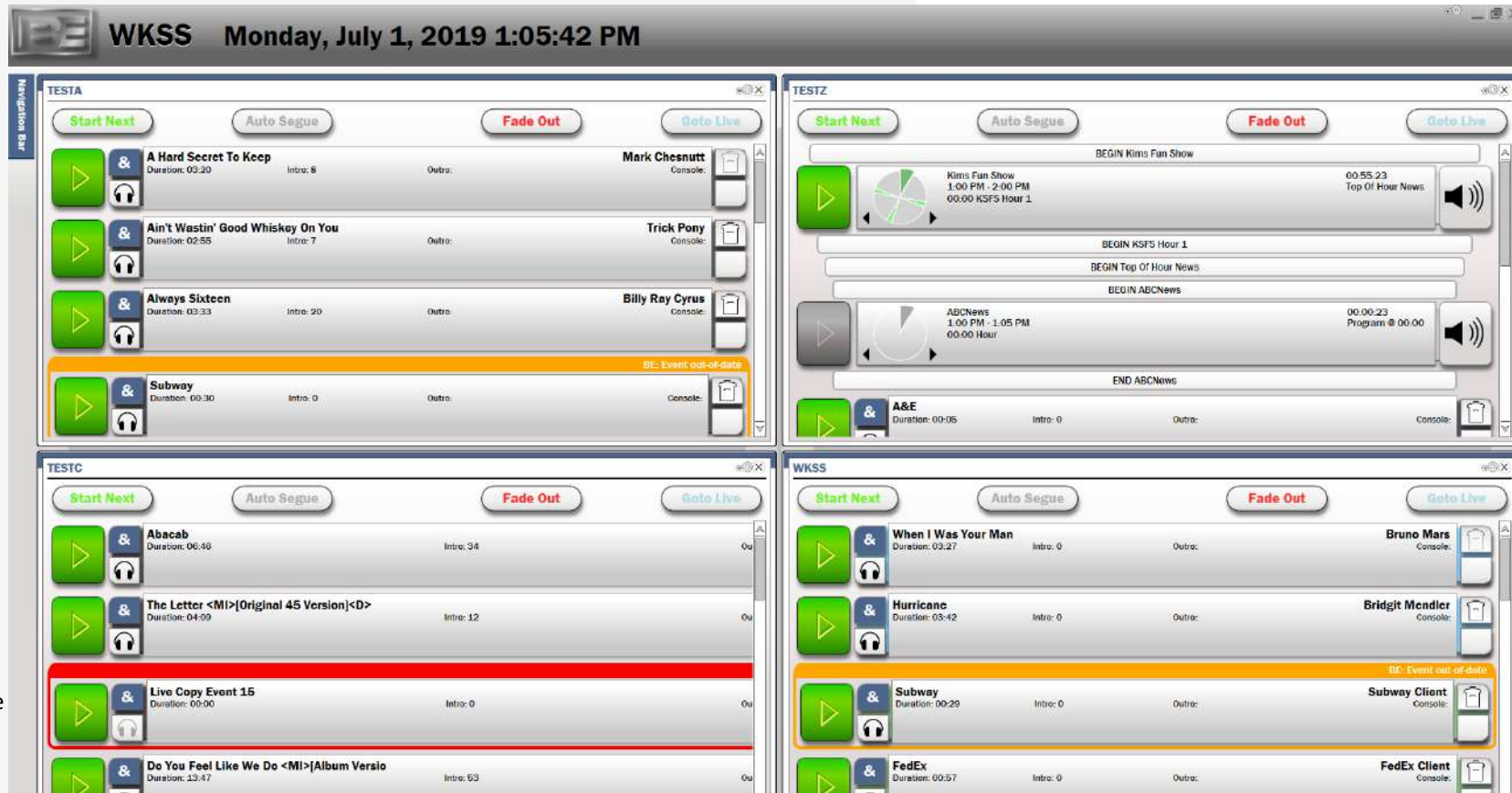
Sched Time	Status	ItemTyp	Title	Artist	Name	Over/Under
Thursday, June 27, 2013		Day				10:58:35
Thursday, June 27		Day				02:13:33
12:00:00 AM		Clock	MusicClockWithGroups			
1:00:00 AM		Clock	MusicClockWithGroups			
2:00:00 AM		Clock	MusicClockWithGroups			
3:00:00 AM		Clock	MusicClockWithGroups			
4:00:00 AM		Clock	MusicClockWithGroups			
5:00:00 AM		Clock	MusicClockWithGroups			
6:00:00 AM		Clock	MusicClockWithGroups			
7:00:00 AM		Clock	MusicClockWithGroups			
8:00:00 AM		Clock	MusicClockWithGroups			
9:00:00 AM		Clock	MusicClockWithGroups			
10:00:00 AM		Clock	MusicClockWithGroups			
11:00:00 AM		Clock	MusicClockWithGroups			-49:55
11:14:10 A	x	Break	Break1			01:13
11:20:33 A		Sweep	Sweep2			-00:55
11:20:33 A		Play	Rock That Body	Black Eyed Peas	CHR-0004E	
11:24:33 A		Play	Bounce (Ft. Kelis)	Calvin Harris	CHR-0004E	
11:28:11 A		Play	Boom Boom Pow	Black Eyed Peas	CHR-0005E	
11:31:44 A		Play	Imma Be	Black Eyed Peas	CHR-0005E	
11:35:37 A		Break	Break2			00:50
11:35:37 A		Play	Jet Blue	Jet Blue Client	0005	
11:36:33 A		Play	Master Foods Combo	Master Foods Client	0006	
11:37:00 A		Play	Geico	Geico Client	0007	
11:37:33 A		Play	Roadside Assistance	BMW Client	0008	
11:38:28 A		Sweep	Sweep3			05:56
11:53:20 A		Break	Break3			01:57
11:57:18 A		Sweep	Sweep4			-01:19
11:59:59 A		Goto	11:59:59 GTL			
12:00:00 PM		Clock	MusicClockWithGroups			02:12
1:00:00 PM		Clock	MusicClockWithGroups			08:04
2:00:00 PM		Clock	MusicClockWithGroups			01:26
3:00:00 PM		Clock	MusicClockWithGroups			04:14
4:00:00 PM		Clock	MusicClockWithGroups			03:49
5:00:00 PM		Clock	MusicClockWithGroups			11:15
6:00:00 PM		Clock	MusicClockWithGroups			06:51
7:00:00 PM		Clock	MusicClockWithGroups			05:15
8:00:00 PM		Clock	MusicClockWithGroups			08:09
9:00:00 PM		Clock	MusicClockWithGroups			02:38
10:00:00 PM		Clock	MusicClockWithGroups			09:41
11:00:00 PM		Clock	MusicClockWithGroups			01:18

Schedule History



# Infinitely Expandable - Configurations Include:

- Single Workstation
- Multi-Workstation
- Multi Station
- Multi City



The screenshot displays a broadcast control interface for station WKSS on Monday, July 1, 2019, at 1:05:42 PM. The interface is divided into four workstation panels, each with a navigation bar and a list of programs with controls.

- TESTA:** Programs include "A Hard Secret To Keep" (Mark Chesnutt), "Ain't Wastin' Good Whiskey On You" (Trick Pony), "Always Sixteen" (Billy Ray Cyrus), and "Subway" (Event out-of-date).
- TESTZ:** Programs include "Kims Fun Show" (1:00 PM - 2:00 PM), "ABCNews" (1:00 PM - 1:05 PM), and "A&E".
- TESTC:** Programs include "Abacab", "The Letter <MI>[Original 45 Version]<D>", "Live Copy Event 15", and "Do You Feel Like We Do <MI>[Album Versio]".
- WKSS:** Programs include "When I Was Your Man" (Bruno Mars), "Hurricane" (Bridgit Mendler), "Subway" (Subway Client), and "FedEx" (FedEx Client).

Each panel features a navigation bar with buttons for "Start Next", "Auto Segue", "Fade Out", and "Goto Live". The program lists include duration, intro/outro times, and console controls.



# As Satellite Automation has evolved so have we:

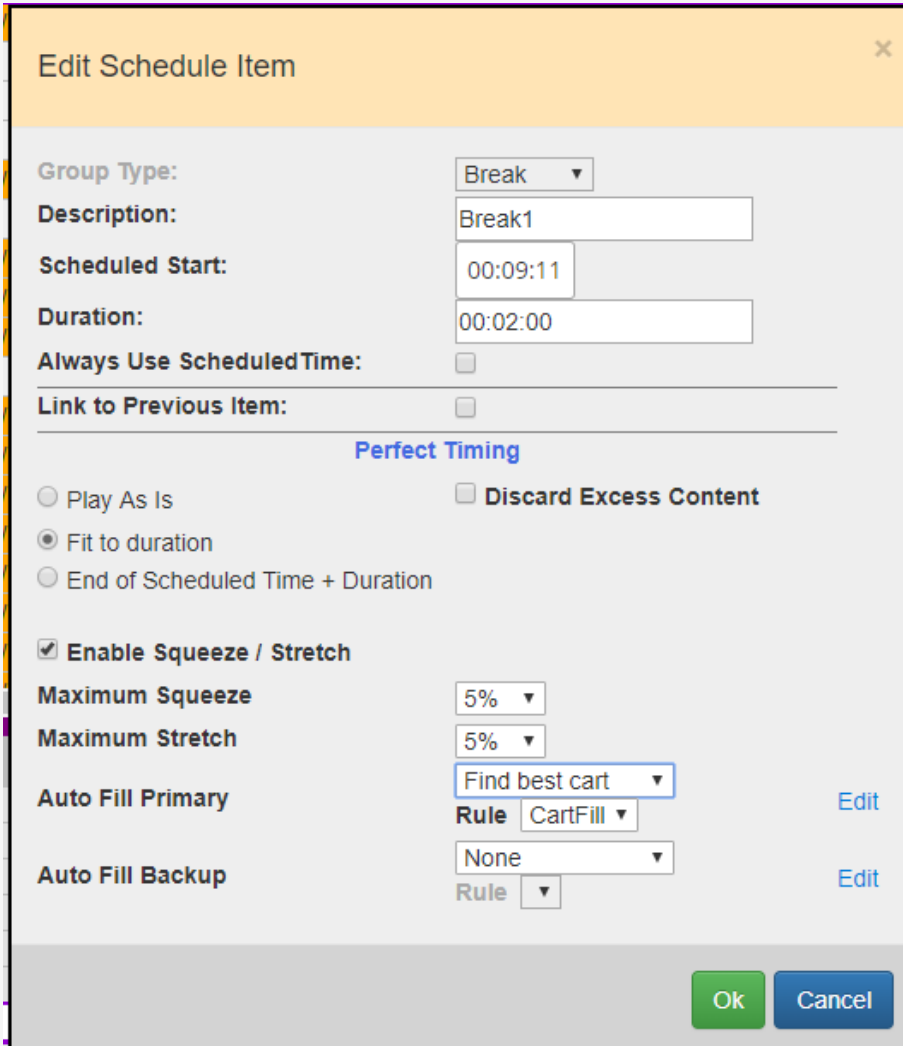


- Replaces AV-Sat
- Full Control via UI Gadget
- Visual Clock building
- Drop down menus for hardware config
- Visual Log Display
- Seamless transition between local and satellite programming





# Perfect Timing™



**Edit Schedule Item**

Group Type: Break

Description: Break1

Scheduled Start: 00:09:11

Duration: 00:02:00

Always Use ScheduledTime:

Link to Previous Item:

**Perfect Timing**

Play As Is  Discard Excess Content

Fit to duration

End of Scheduled Time + Duration

Enable Squeeze / Stretch

Maximum Squeeze: 5%

Maximum Stretch: 5%

Auto Fill Primary: Find best cart [Edit](#)

Rule: CartFill

Auto Fill Backup: None [Edit](#)

Rule:

Ok Cancel

- Applies to groups (breaks, sweeps, hours)
- Define playback rule
  - Fit to duration
  - Fit to scheduled time plus duration
- Squeeze/Stretch to time out breaks, sweeps, hours.
- Auto fill rules
  - Random
  - CartFill
  - Music Master requests
  - Wedel Software
- Applied at runtime.
- Recalculated as group durations change.



# Music Scheduling and Traffic and Billing *(New)*



**MusicMaster**  
SCHEDULING



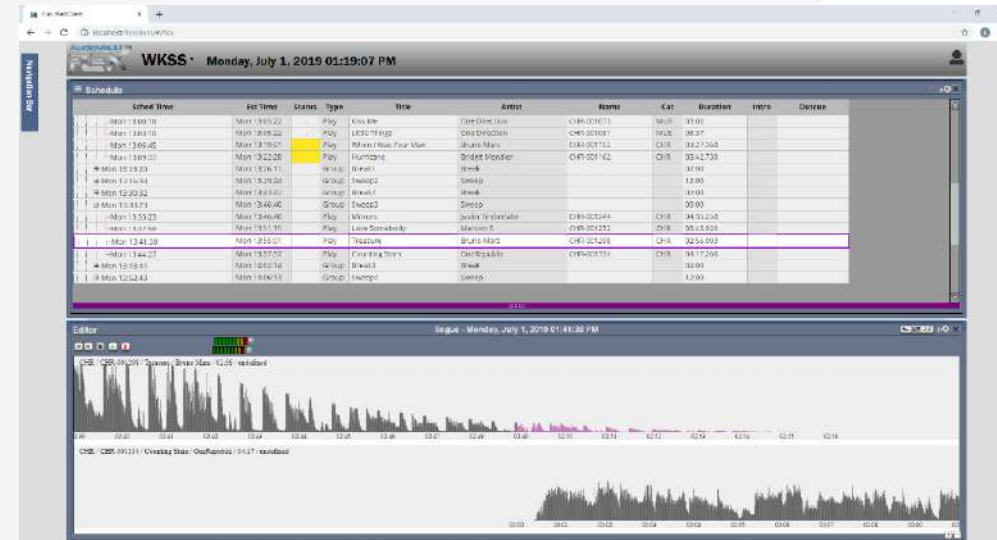
**Wedel**  
**Software**  
Media Information Systems

- We integrate with Music Master & Wedelsoft
- Real time reconciliation
- Song suggestion and replacement
- Autofill songs and breaks with Music Master and Wedelsoft
- Library Database Synchronization between AudioVAULT, Music Master, and Wedelsoft



# Improved FlexWeb

- Replaces AVScheduler
- Full system control anytime from anywhere
- Browser-based access
- Automation Schedule access and control
- Remote Browser Based VTK
- Multi-Station Control



# *NEW*

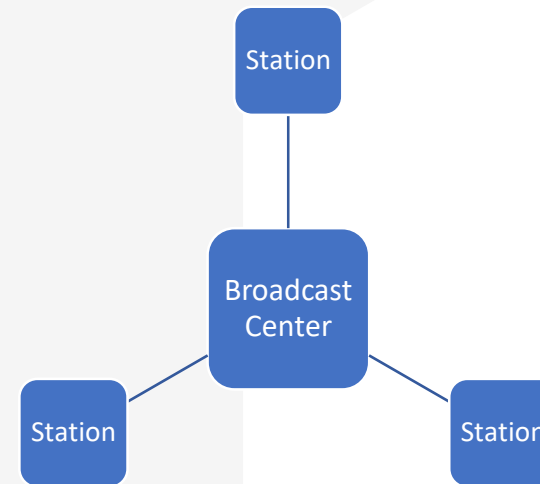
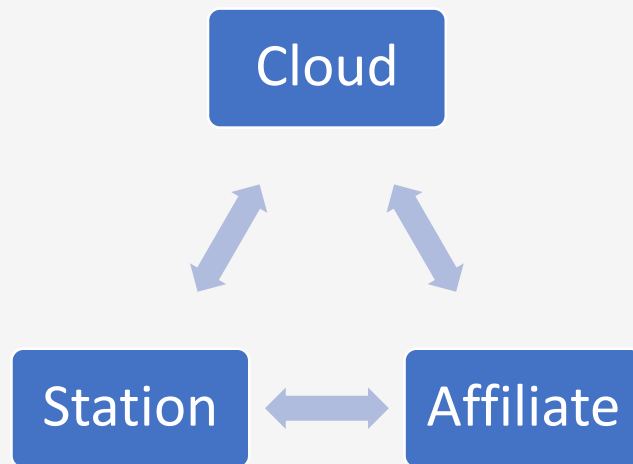
## Cloud Capability



- Automatic or manual file transfer
- Full user security with two factor authentication
- Commercial or private cloud storage locations supported
- CloudVAULT advanced file synchronization allows full NFServer file distribution



# **NEW** Advanced Enterprise Automation



- Unlimited stations and locations
- Control any playout location from anywhere with FlexWeb
- Scheduling any station from anywhere with complete integration using Music Master and Wedelsoft
- Cloud file storage with advanced file synchronization
- Breakaway automation engines for separate affiliate programming



# Let's give it a spin....



# Your Questions?

*We'll try to answer them all here, but if we can't we'll email you.*



# Thank You



Radio & Television  
Broadcast Equipment  
and Solutions Worldwide

Contacts:

Bob Demuth

[rdemuth@elenosgroup.com](mailto:rdemuth@elenosgroup.com)

We know how valuable your time is, and we are honored that you chose to spend time with us.

Please check out our upcoming webinar schedule at:  
[www.elenosgroup.com/webinar/](http://www.elenosgroup.com/webinar/)

For further information, contact your regional Elenos Group sales professional

